



Cotton Outlook

Volume 2 Edition 21

September 26, 2007

MOTH TRAPS:

	Bollworm			
	Altus	Hollis	Manchester ¹	Tipton
June	194	69	44	389
July	264	199	10	411
Aug	119	153	2	265
Sep 1	81	94	TTD ²	126
Sep 8	38	34	TTD	25
Sep 15	14	8	TTD	12
Sep 22	23	7	TTD	9
	Budworm			
	Altus	Hollis	Manchester	Tipton
June	17	5	0	44
July	29	12	0	50
Aug	4	2	0	46
Sep 1	14	11	TTD	31
Sep 8	2	5	TTD	12
Sep 15	0	0	TTD	0
Sep 22	0	0	TTD	0
	Beet Armyworm			
	Altus	Hollis	Manchester	Tipton
June	25	27	6	39
July	29	13	2	44
Aug	8	4	0	12
Sep 1	5	8	TTD	6
Sep 8	1	0	TTD	0
Sep 15	0	0	TTD	0
Sep 22	0	0	TTD	0

¹Traps established and maintained by Scott Price.

²TTD –Trap taken down

GROWING DEGREE DAY:

A Growing Degree Day (GDD) is defined as 24 hours of time in which the temperature is one degree above the lower temperature threshold (60°F - 100°F). By using this range and the high and low temperatures for each day of the growing season, the amount of heat available to the cotton, measured in day degrees, can be calculated. The heat unit data is collected from *Mesonet weather network weekly*.

Cotton Growth Timetable

Stage of Growth	GDD	Days
Emergence	50 - 60	3 - 4
Pinhead Square	425 - 500	25 - 45
First Bloom	725 - 825	41 - 67
Open Boll	1575 - 1925	102 - 127
Defoliation	2150 - 2300	120 - 140

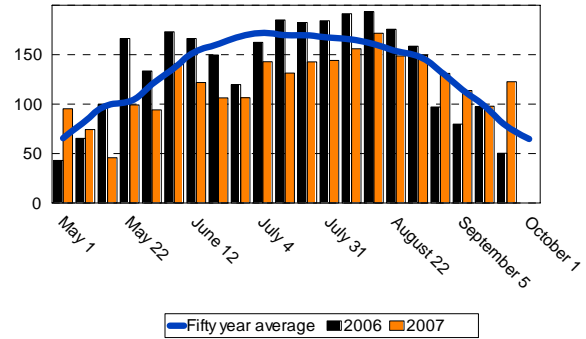
FOR FURTHER INFORMATION CONTACT:

Jerry Goodson
Extension Assistant
16721 U.S. Hwy 283
Altus, Oklahoma 73521
Office: 580-482-8880
Mobile: 580-471-8969
E-mail: jerry.goodson@okstate.edu

Altus

Growing Degree Days (GDD)

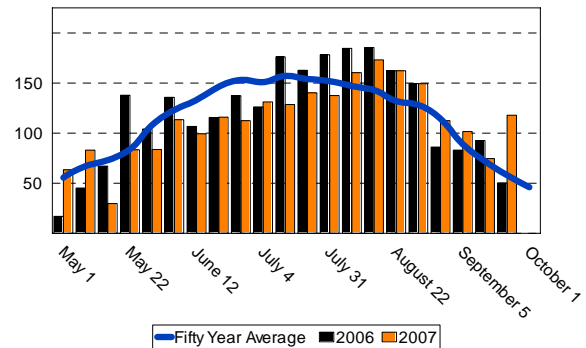
	<u>50 year</u>	<u>2006</u>	<u>2007</u>
May	469.9	507.8	408.7
June	616.9	608.9	486.3
July	678.3	714.2	560.8
August	761.1	816.2	756.4
September 5	114.4	79.7	113.8
September 12	98.0	97.4	97.8
September 19	77.5	50.4	122.7
Total	2,816.1	2,874.6	2,546.5



Blackwell

Growing Degree Days (GDD)

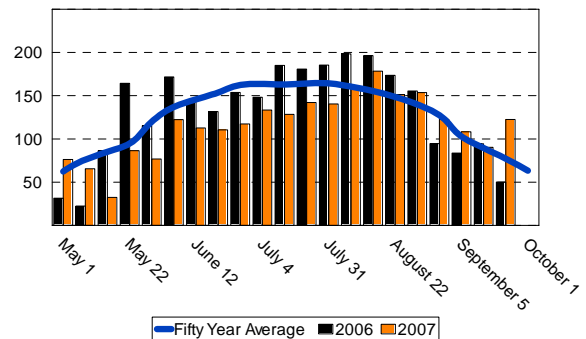
	<u>50 year</u>	<u>2006</u>	<u>2007</u>
May	389.7	371.0	343.0
June	556.8	495.4	441.0
July	615.2	643.2	537.4
August	665.8	767.8	757.5
September 5	89.4	83.1	101.5
September 12	72.4	92.6	74.6
September 19	58.2	50.2	117.8
Total	2,447.5	2,503.3	2,372.8.0



Hobart

Growing Degree Days (GDD)

	<u>50 year</u>	<u>2006</u>	<u>2007</u>
May	437.9	419.5	337.0
June	598.8	599.9	462.6
July	654.7	699.2	544.3
August	731.1	818.0	766.0
September 5	102.9	83.6	108.2
September 12	89.4	94.3	90.3
September 19	77.2	50.1	122.4
Total	2,692.0	2,764.6	2,430.8



Oklahoma State University, U.S. Department of Agriculture, State and Local Governments Cooperating. The Oklahoma Cooperative Extension Service offers its programs to all eligible persons regardless of race, color, national origin, gender, age, religion, disability, or status as a veteran, and is an equal opportunity employer.