



Cotton Outlook

Volume 2 Edition 19

September 12, 2007

MOTH TRAPS:

Week of	Bollworm			
	Altus	Hollis	Manchester ¹	Tipton
June 9	34	23	12	115
June 16	22	18	0	89
June 23	54	12	30	68
June 30	84	16	2	117
July 7	119	64	8	124
July 14	49	21	2	91
July 21	31	33	0	59
July 28	65	81	0	137
Aug 4	41	24	1	89
Aug 11	40	37	1	49
Aug 18	21	22	0	31
Aug 25	64	70	0	96
Sep 1	81	94	TTD ²	126
Sep 8	38	34	TTD	25
	Budworm			
	Altus	Hollis	Manchester	Tipton
June 9	3	0	0	16
June 16	6	4	0	14
June 23	8	0	0	8
June 30	0	1	0	6
July 7	11	2	0	9
July 14	6	4	0	11
July 21	8	4	0	12
July 28	4	2	0	18
Aug 4	0	0	0	16
Aug 11	0	0	0	6
Aug 18	0	0	0	8
Aug 25	4	2	0	16
Sep 1	14	11	TTD	31
Sep 8	2	5	TTD	12
	Beet Armyworm			
	Altus	Hollis	Manchester	Tipton
June 9	7	9	1	11
June 16	10	10	2	17
June 23	8	6	2	7
June 30	0	2	1	4
July 7	18	9	2	5
July 14	0	0	0	4
July 21	0	0	0	14
July 28	11	4	0	21
Aug 4	1	3	0	5
Aug 11	0	0	0	4
Aug 18	1	0	0	3
Aug 25	6	1	0	0
Sep 1	5	8	TTD	6
Sep 8	1	0	TTD	0

¹Traps established and maintained by Scott Price.

²TTD –Trap taken down

GROWING DEGREE DAY:

A Growing Degree Day (GDD) is defined as 24 hours of time in which the temperature is one degree above the lower temperature threshold (60°F - 100°F). By using this range and the high and low temperatures for each day of the growing season, the amount of heat available to the cotton, measured in day degrees, can be calculated. The heat unit data is collected from *Mesonet weather network* weekly.

Cotton Growth Timetable

<u>Stage of Growth</u>	<u>GDD</u>	<u>Days</u>
Emergence	50 - 60	3 - 4
Pinhead Square	425 - 500	25 - 45
First Bloom	725 - 825	41 - 67
Open Boll	1575 - 1925	102 - 127
Defoliation	2150 - 2300	120 - 140

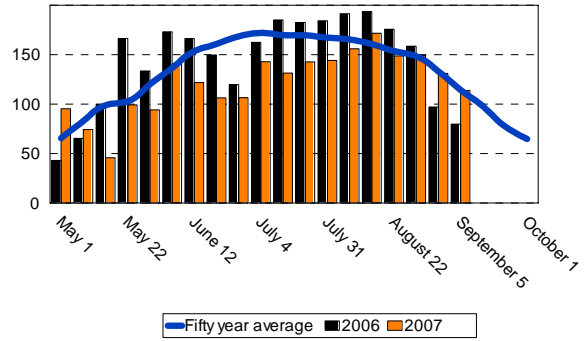
FOR FURTHER INFORMATION CONTACT:

Jerry Goodson
Extension Assistant
16721 U.S. Hwy 283
Altus, Oklahoma 73521
Office: 580-482-8880
Mobile: 580-471-8969
E-mail: jerry.goodson@okstate.edu

Altus

Growing Degree Days (GDD)

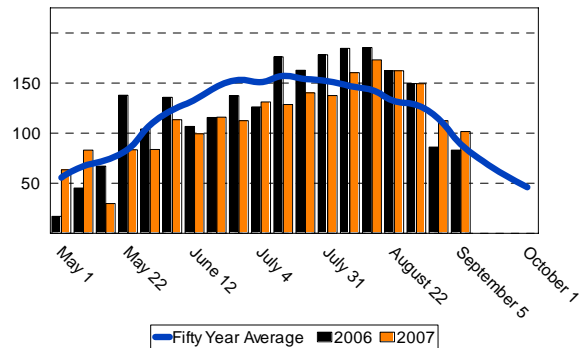
	<u>50 year</u>	<u>2006</u>	<u>2007</u>
May	469.9	507.8	408.7
June	616.9	608.9	486.3
July	678.3	714.2	560.8
August	761.1	816.2	756.4
September 5	114.4	79.7	113.8
Total	2,640.6	2,726.8	2,326.0



Blackwell

Growing Degree Days (GDD)

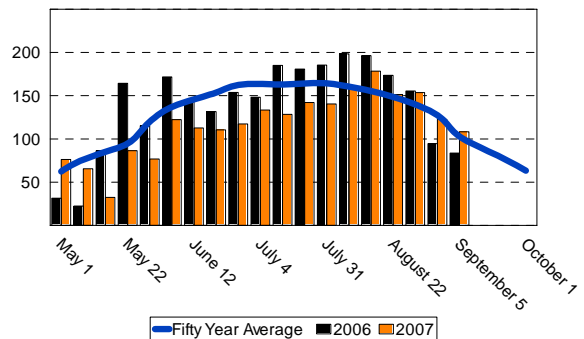
	<u>50 year</u>	<u>2006</u>	<u>2007</u>
May	389.7	371.0	343.0
June	556.8	495.4	441.0
July	615.2	643.2	537.4
August	665.8	767.8	757.5
September 5	89.4	83.1	101.5
Total	2,316.9	2,360.5	2,180.4



Hobart

Growing Degree Days (GDD)

	<u>50 year</u>	<u>2006</u>	<u>2007</u>
May	437.9	419.5	337.0
June	598.8	599.9	462.6
July	654.7	699.2	544.3
August	731.1	818.0	766.0
September 5	102.9	83.6	108.2
Total	2,525.4	2,620.2	2,218.1



Oklahoma State University, U.S. Department of Agriculture, State and Local Governments Cooperating. The Oklahoma Cooperative Extension Service offers its programs to all eligible persons regardless of race, color, national origin, gender, age, religion, disability, or status as a veteran, and is an equal opportunity employer.