



Cotton Outlook

Volume 2 Edition 18

September 5, 2007

MOTH TRAPS:

Week of	Bollworm			
	Altus	Hollis	Manchester ¹	Tipton
June 9	34	23	12	115
June 16	22	18	0	89
June 23	54	12	30	68
June 30	84	16	2	117
July 7	119	64	8	124
July 14	49	21	2	91
July 21	31	33	0	59
July 28	65	81	0	137
Aug 4	41	24	1	89
Aug 11	40	37	1	49
Aug 18	21	22	0	31
Aug 25	64	70	0	96
Sep 1	81	94	TTD ²	126
Week of	Budworm			
	Altus	Hollis	Manchester	Tipton
June 9	3	0	0	16
June 16	6	4	0	14
June 23	8	0	0	8
June 30	0	1	0	6
July 7	11	2	0	9
July 14	6	4	0	11
July 21	8	4	0	12
July 28	4	2	0	18
Aug 4	0	0	0	16
Aug 11	0	0	0	6
Aug 18	0	0	0	8
Aug 25	4	2	0	16
Sep 1	14	11	TTD	31
Week of	Beet Armyworm			
	Altus	Hollis	Manchester	Tipton
June 9	7	9	1	11
June 16	10	10	2	17
June 23	8	6	2	7
June 30	0	2	1	4
July 7	18	9	2	5
July 14	0	0	0	4
July 21	0	0	0	14
July 28	11	4	0	21
Aug 4	1	3	0	5
Aug 11	0	0	0	4
Aug 18	1	0	0	3
Aug 25	6	1	0	0
Sep 1	5	8	TTD	6

¹Traps established and maintained by Scott Price.

²TTD –Trap taken down

GROWING DEGREE DAY:

A Growing Degree Day (GDD) is defined as 24 hours of time in which the temperature is one degree above the lower temperature threshold (60°F - 100°F). By using this range and the high and low temperatures for each day of the growing season, the amount of heat available to the cotton, measured in day degrees, can be calculated. The heat unit data is collected from *Mesonet weather network* weekly.

Cotton Growth Timetable

Stage of Growth	GDD	Days
Emergence	50 - 60	3 - 4
Pinhead Square	425 - 500	25 - 45
First Bloom	725 - 825	41 - 67
Open Boll	1575 - 1925	102 - 127
Defoliation	2150 - 2300	120 - 140

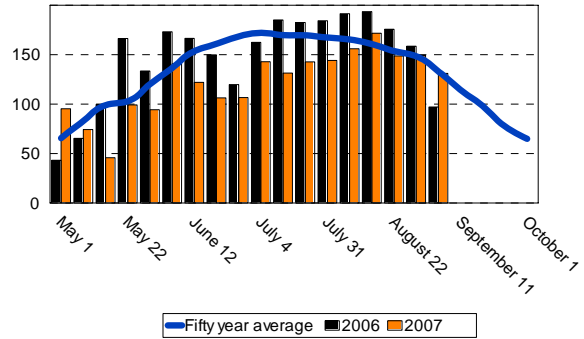
FOR FURTHER INFORMATION CONTACT:

Jerry Goodson
Extension Assistant
16721 U.S. Hwy 283
Altus, Oklahoma 73521
Office: 580-482-8880
Mobile: 580-471-8969
E-mail: jerry.goodson@okstate.edu

Altus

Growing Degree Days (GDD)

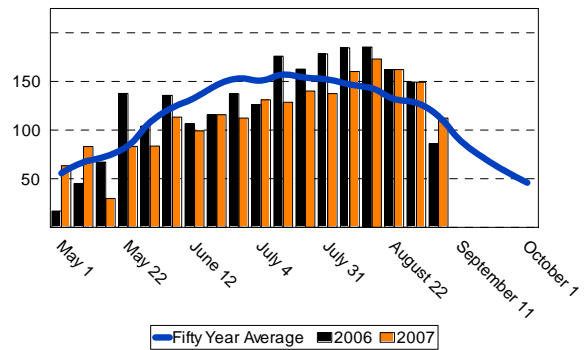
Week of	50 year	2006	2007
May 1	65.5	43.1	95.3
May 8	82.9	65.3	74.2
May 15	98.6	99.7	45.8
May 22	102.9	166.3	99.2
May 29	120.0	133.4	94.2
June 5	134.4	173.1	140.7
June 12	153.4	166.4	121.9
June 19	160.7	149.7	106.3
June 26	168.4	119.7	117.4
July 4	171.9	162.4	142.8
July 11	169.7	185.1	131.3
July 18	169.5	182.5	142.6
July 25	167.2	184.2	144.1
Aug 1	165.3	191.4	155.9
Aug 8	160.6	193.4	171.6
Aug 15	153.7	175.7	148.6
Aug 22	148.3	158.6	149.2
Aug 29	133.2	97.1	131.1
Total	2,526.2	2,647.1	2,212.2



Blackwell

Growing Degree Days (GDD)

Week of	50 year	2006	2007
May 1	55.6	16.8	63.4
May 8	67.5	45.2	83.1
May 15	73.2	67.1	29.6
May 22	84.6	137.8	83.3
May 29	108.8	104.1	83.6
June 5	123.4	135.7	113.4
June 12	133.6	106.7	99.3
June 19	146.4	115.6	115.9
June 26	153.4	137.4	112.4
July 4	151.2	126.1	131.1
July 11	157.1	176.1	128.6
July 18	154.4	162.7	140.2
July 25	152.5	178.3	137.5
Aug 1	147.3	184.6	160.3
Aug 8	143.8	185.4	173.1
Aug 15	132.1	162.3	162.4
Aug 22	128.3	149.4	149.3
Aug 29	114.3	86.1	112.4
Total	2,227.5	2,277.4	2,078.9



Hobart

Growing Degree Days (GDD)

Week of	50 year	2006	2007
May 1	62.3	31.4	76.2
May 8	76.2	22.4	65.4
May 15	84.9	86.2	32.3
May 22	94.7	164.2	86.4
May 29	119.8	115.3	76.7
June 5	136.9	171.7	122.3
June 12	145.9	142.9	112.7
June 19	153.6	131.6	110.4
June 26	162.4	153.7	117.2
July 4	163.5	148.1	133.4
July 11	162.9	184.9	128.4
July 18	164.1	180.8	142.1
July 25	164.2	185.4	140.4
Aug 1	160.2	198.3	160.1
Aug 8	155.5	196.2	178.4
Aug 15	148.3	173.6	151.3
Aug 22	139.8	155.3	153.6
Aug 29	127.3	94.6	122.6
Total	2,422.5	2,536.6	2,109.9.0

