



# Cotton Outlook

Volume 2 Edition 17

August 29, 2007

## MOTH TRAPS:

Week of	Bollworm			
	Altus	Hollis	Manchester <sup>1</sup>	Tipton
June 9	34	23	12	115
June 16	22	18	0	89
June 23	54	12	30	68
June 30	84	16	2	117
July 7	119	64	8	124
July 14	49	21	2	91
July 21	31	33	0	59
July 28	65	81	0	137
Aug 4	41	24	1	89
Aug 11	40	37	1	49
Aug 18	21	22	0	31
Aug 25	64	70	0	96
	Budworm			
	Altus	Hollis	Manchester	Tipton
June 9	3	0	0	16
June 16	6	4	0	14
June 23	8	0	0	8
June 30	0	1	0	6
July 7	11	2	0	9
July 14	6	4	0	11
July 21	8	4	0	12
July 28	4	2	0	18
Aug 4	0	0	0	16
Aug 11	0	0	0	6
Aug 18	0	0	0	8
Aug 25	4	2	0	16
	Beet Armyworm			
	Altus	Hollis	Manchester	Tipton
June 9	7	9	1	11
June 16	10	10	2	17
June 23	8	6	2	7
June 30	0	2	1	4
July 7	18	9	2	5
July 14	0	0	0	4
July 21	0	0	0	14
July 28	11	4	0	21
Aug 4	1	3	0	5
Aug 11	0	0	0	4
Aug 18	1	0	0	3
Aug 25	6	1	0	0

<sup>1</sup>Traps established and maintained by Scott Price.

## GROWING DEGREE DAY:

**A** Growing Degree Day (GDD) is defined as 24 hours of time in which the temperature is one degree above the lower temperature threshold (60°F - 100°F). By using this range and the high and low temperatures for each day of the growing season, the amount of heat available to the cotton, measured in day degrees, can be calculated. The heat unit data is collected from *Mesonet weather network weekly*.

### Cotton Growth Timetable

Stage of Growth	GDD	Days
Emergence	50 - 60	3 - 4
Pinhead Square	425 - 500	25 - 45
First Bloom	725 - 825	41 - 67
Open Boll	1575 - 1925	102 - 127
Defoliation	2150 - 2300	120 - 140

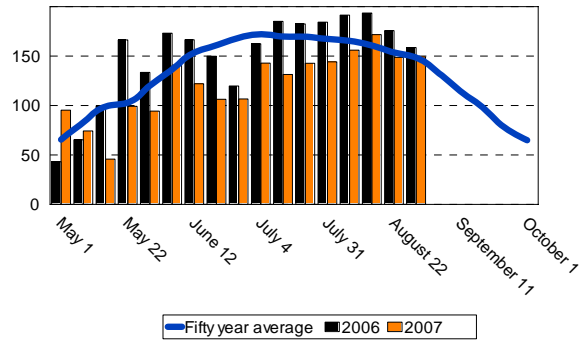
### FOR FURTHER INFORMATION CONTACT:

**Jerry Goodson**  
**Extension Assistant**  
**16721 U.S. Hwy 283**  
**Altus, Oklahoma 73521**  
**Office: 580-482-8880**  
**Mobile: 580-471-8969**  
**E-mail: [jerry.goodson@okstate.edu](mailto:jerry.goodson@okstate.edu)**

## Altus

**Growing Degree Days (GDD)**

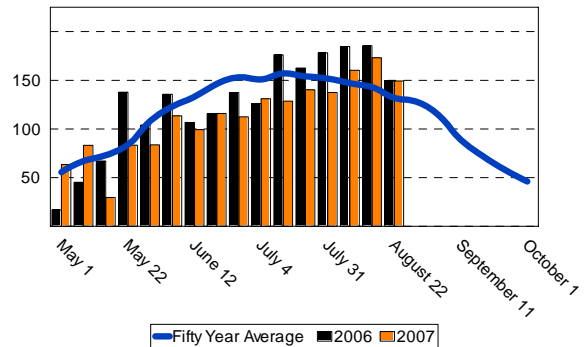
<u>Week of</u>	<u>50 year</u>	<u>2006</u>	<u>2007</u>
May 1	65.5	43.1	95.3
May 8	82.9	65.3	74.2
May 15	98.6	99.7	45.8
May 22	102.9	166.3	99.2
May 29	120.0	133.4	94.2
June 5	134.4	173.1	140.7
June 12	153.4	166.4	121.9
June 19	160.7	149.7	106.3
June 26	168.4	119.7	117.4
July 4	171.9	162.4	142.8
July 11	169.7	185.1	131.3
July 18	169.5	182.5	142.6
July 25	167.2	184.2	144.1
Aug 1	165.3	191.4	155.9
Aug 8	160.6	193.4	171.6
Aug 15	153.7	175.7	148.6
Aug 22	148.3	158.6	149.2
<b>Total</b>	<b>2,393.0</b>	<b>2,550.0</b>	<b>2,081.1</b>



## Blackwell

**Growing Degree Days (GDD)**

<u>Week of</u>	<u>50 year</u>	<u>2006</u>	<u>2007</u>
May 1	55.6	16.8	63.4
May 8	67.5	45.2	83.1
May 15	73.2	67.1	29.6
May 22	84.6	137.8	83.3
May 29	108.8	104.1	83.6
June 5	123.4	135.7	113.4
June 12	133.6	106.7	99.3
June 19	146.4	115.6	115.9
June 26	153.4	137.4	112.4
July 4	151.2	126.1	131.1
July 11	157.1	176.1	128.6
July 18	154.4	162.7	140.2
July 25	152.5	178.3	137.5
Aug 1	147.3	184.6	160.3
Aug 8	143.8	185.4	173.1
Aug 15	132.1	162.3	162.4
Aug 22	128.3	149.4	149.3
<b>Total</b>	<b>2,113.2</b>	<b>2,191.3</b>	<b>1,966.5</b>



## Hobart

**Growing Degree Days (GDD)**

<u>Week of</u>	<u>50 year</u>	<u>2006</u>	<u>2007</u>
May 1	62.3	31.4	76.2
May 8	76.2	22.4	65.4
May 15	84.9	86.2	32.3
May 22	94.7	164.2	86.4
May 29	119.8	115.3	76.7
June 5	136.9	171.7	122.3
June 12	145.9	142.9	112.7
June 19	153.6	131.6	110.4
June 26	162.4	153.7	117.2
July 4	163.5	148.1	133.4
July 11	162.9	184.9	128.4
July 18	164.1	180.8	142.1
July 25	164.2	185.4	140.4
Aug 1	160.2	198.3	160.1
Aug 8	155.5	196.2	178.4
Aug 15	148.3	173.6	151.3
Aug 22	148.3	173.6	151.3
<b>Total</b>	<b>2,007.1</b>	<b>2,113.1</b>	<b>1,682.4</b>

