



Current Crop and Insect Situation:

Beneficial rains fell over parts of Oklahoma. Hopefully with more rain forecasted for this weekend everyone will receive rain. Cotton is beginning to fruit in the majority of early to mid-May planted cotton. Now is the time to spend more time in the field.



Mid-Season Insects



Closer inspections of infested plants will reveal BAW devouring all edible parts (squares, blooms and bolls). Best control is when BAW are 1/4 inch or smaller. Unfortunately when window paneing is apparent, larger worms are usually present. Insecticide selection will depend on the other pests present.

Conditions this cotton season favor the development of Beet armyworm infestation. Although Beet armyworms are considered a later season pest early detection now will help later on. Beet armyworms thrive in hot dry conditions with “skippy” plant populations. BAW moths generally select open canopy and stunted or stressed plants to lay egg masses. These egg masses become “hits” as the larvae hatch and begin feeding on the undersides of the leaves. Infested leaves will have a window pane appearance since the upper surface of the leaf remains.



BAW SURVIVAL TIPS:

Conserve beneficial insects -

Natural enemies play a major role in keeping BAW numbers low. At least 10 parasites and 13 predators have been identified (in Georgia) as attacking BAW eggs and larvae.

Let low populations of cotton fleahoppers, bollworms and cotton aphids alone -

Beneficial insects are attracted to aphid infested fields and repopulate quickly. In fields with abundant beneficials, let light infestations of bollworms (4 to 6%) alone especially if egg masses or fresh “hits” are found.

Before spraying, scout field for BAW egg masses and fresh “hits” - Even if the field is clean, BAW moths can lay in behind the application.

SCOUTING PROCEDURE TO DETECT EGG MASSES:

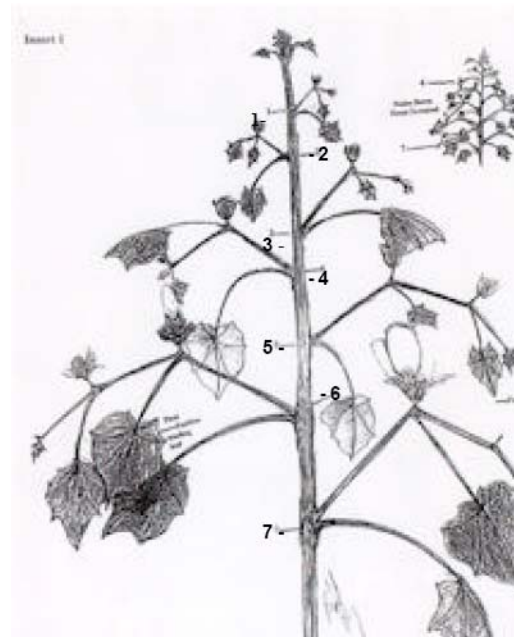
Scouting for BAW egg masses requires a different approach than looking in the terminal and side fruiting branch tips for bollworm eggs. BAW moths will lay anywhere on the plant, but they tend to prefer to lay on the middle to top 1/3 of the plant. Eggs will be laid on the undersides of leaves. Most of the egg masses detected in previous years were found 4 to 6 nodes below the terminal area. Sixty to seventy percent of the egg masses were laid on the subtending leaf at the first position on the fruiting branch. The rest of the egg masses were detected on the first, full-sized leaf 1 position back from the terminal area on fruiting branches located 4 to 6 nodes below the terminal. Or another way to say it is the last fully extended leaf on the fruiting branch tip.



BAW egg masses look like the tip of a Cutex swab glued down to the underside of a leaf. Egg

masses will vary in size and shape, but will always be covered with hair (fuzzy). Others refer to them as a wad of spit.

Fall armyworm (FAW) egg masses differ from BWA egg masses in how the eggs are arranged. FAW eggs are stacked in layers and BAW eggs are laid in single rows. Hopefully you will be able to identify any egg masses resembling the above descriptions.



**FIELD SURVEY
JUNE 19, 2006**

Irrigated		
Jackson county		
	Plant Stage	Pest
1	Pinhead sqs	6% Fleahoppers
2	Pinhead sqs	4% Fleahoppers
3	Pinhead sqs	2% Fleahoppers
Harmon county		
1	Pinhead sqs	4% Fleahoppers
2	Pinhead sqs	4% Fleahoppers
3	Pinhead sqs	3% Fleahoppers
Dryland		
Tillman county		
1	Pinhead sqs	2% Fleahoppers
2	Pinhead sqs	2% Fleahoppers
3	Pinhead sqs	3% Fleahoppers
Greer county		
1	5 th leaf stage	< 1 thrip per plant
2	4 th leaf stage	< 1 thrip per plant
3	5 th leaf stage	< 1 thrip per plant

MOTH TRAPS:

Week of	Bollworm			
	Altus	Hollis	Manchester	Tipton
June 10	4	3	NA	3
June 17	9	6	NA	11
Week of	Budworm			
	Altus	Hollis	Manchester	Tipton
June 10	0	0	NA	0
June 17	0	2	NA	1
Week of	Beet armyworm			
	Altus	Hollis	Manchester	Tipton
June 10	1	0	NA	0
June 17	0	0	NA	3

GROWING DEGREE DAY:

A Growing Degree Day (GDD) is defined as 24 hours of time in which the temperature is one degree above the lower temperature threshold (60°F - 100°F). By using this range and the high and low temperatures for each day of the growing season, the amount of heat available to the cotton, measured in day degrees, can be calculated. The heat unit data is collected from *Mesonet weather network weekly*.

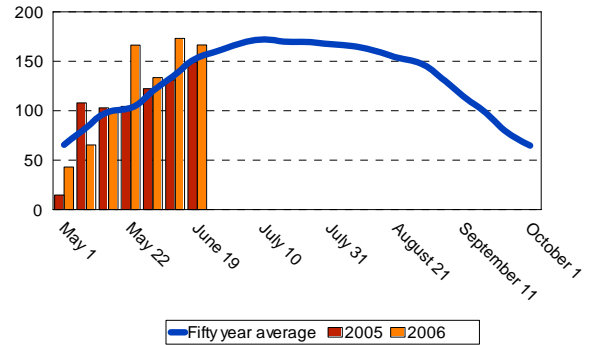
Cotton Growth Timetable

Stage of Growth	GDD	Days
Emergence	50 - 60	3 - 4
Pinhead Square	425 - 500	25 - 45
First Bloom	725 - 825	41 - 67
Open Boll	1575 - 1925	102 - 127
Defoliation	2150 - 2300	120 - 140

Altus

Growing Degree Days (GDD)

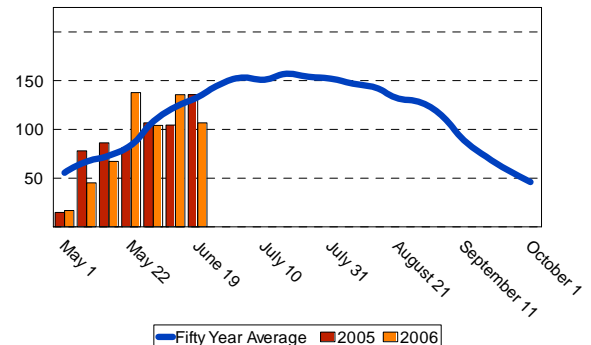
Week of	50 year	2005	2006
May 1	65.5	14.7	43.1
May 8	82.9	107.9	65.3
May 15	98.6	102.9	99.7
May 22	102.9	104.4	166.3
May 29	120.2	122.3	133.4
June 5	136.4	131.2	173.1
June 12	153.4	149.3	166.4
Total	759.9	732.7	847.3



Blackwell

Growing Degree Days (GDD)

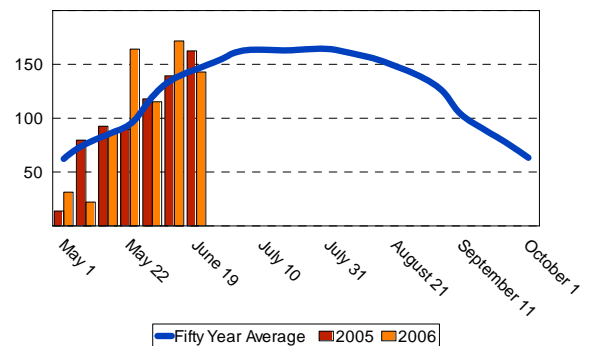
Week of	50 year	2005	2006
May 1	55.6	14.9	16.8
May 8	67.5	78.0	45.2
May 15	73.2	86.2	67.1
May 22	84.3	81.2	137.8
May 29	108.4	106.8	104.1
June 5	123.7	104.5	135.6
June 12	133.4	135.7	106.7
Total	646.1	607.3	613.3



Hobart

Growing Degree Days (GDD)

Week of	50 year	2005	2006
May 1	62.3	13.8	31.4
May 8	76.2	79.6	22.4
May 15	84.9	92.6	86.2
May 22	94.7	89.9	164.2
May 29	119.8	117.9	115.3
June 5	136.9	139.4	171.7
June 12	145.6	162.5	142.9
Total	720.4	695.7	734.1



FOR FURTHER INFORMATION CONTACT:

Jerry Goodson
Extension Assistant
16721 U.S. Hwy 283
Altus, Oklahoma 73521
Office: 580-482-8880
Mobile: 580-471-8969
E-mail: jrg@osu.altus.ok.us