



Cotton Outlook

Volume 1 Edition 22

September 27, 2006

MOTH TRAPS:

Bollworm				
	Altus	Hollis	Manchester	Tipton
June	29	30	5	38
July	183	217	49	171
Aug	47	43	29	42
Sept 2	19	8	47	11
Sept 9	24	12	13	9
Sept 16	19	16	25	15
Sept 24	5	7	NA	12
Budworm				
	Altus	Hollis	Manchester	Tipton
June	2	3	0	11
July	41	32	0	94
Aug	10	4	0	3
Sept 2	0	0	10	9
Sept 9	0	0	2	3
Sept 16	13	11	0	8
Sept 24	6	4	NA	9
Beet Armyworm				
	Altus	Hollis	Manchester	Tipton
June	2	2	11	6
July	47	25	4	85
Aug	0	0	1	3
Sept 2	0	0	0	0
Sept 9	0	0	0	0
Sept 16	0	0	0	0
Sept 24	0	0	NA	0

A Growing Degree Day (GDD) is defined as 24 hours of time in which the temperature is one degree above the lower temperature threshold (60°F - 100°F). By using this range and the high and low temperatures for each day of the growing season, the amount of heat available to the cotton, measured in day degrees, can be calculated. The heat unit data is collected from *Mesonet weather network weekly*.

Cotton Growth Timetable

<u>Stage of Growth</u>	<u>GDD</u>	<u>Days</u>
Emergence	50 - 60	3 - 4
Pinhead Square	425 - 500	25 - 45
First Bloom	725 - 825	41 - 67
Open Boll	1575 - 1925	102 - 127
Defoliation	2150 - 2300	120 - 140

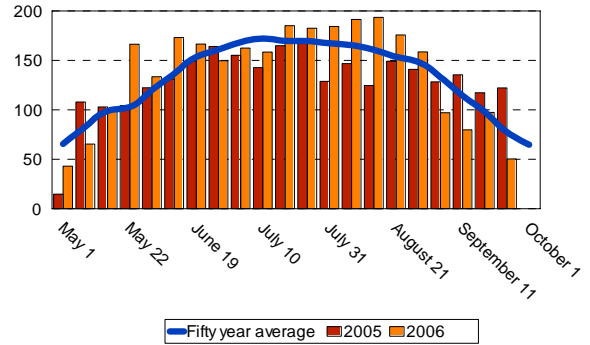
FOR FURTHER INFORMATION CONTACT:

Jerry Goodson
Extension Assistant
16721 U.S. Hwy 283
Altus, Oklahoma 73521
Office: 580-482-8880
Mobile: 580-471-8969
E-mail: jrg@osu.altus.ok.us

Altus

Growing Degree Days (GDD)

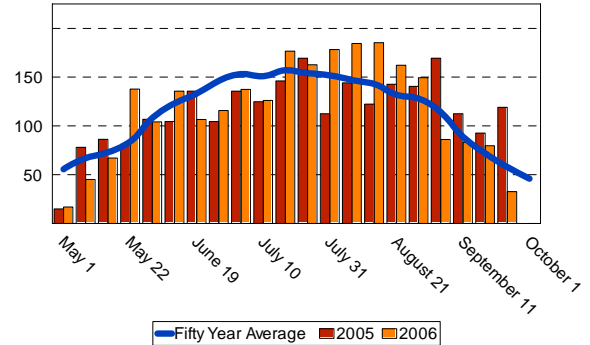
	<u>50 year</u>	<u>2005</u>	<u>2006</u>
May	470.1	452.2	507.8
June	570.5	621.3	634.8
July	846.76	662.1	901.6
August	628.24	626.8	818.2
Sept 4	114.4	135.4	79.7
Sept 11	98.0	117.3	97.4
Sept 18	77.5	122.1	50.4
Total	2,805.5	2,737.2	3,089.9



Blackwell

Growing Degree Days (GDD)

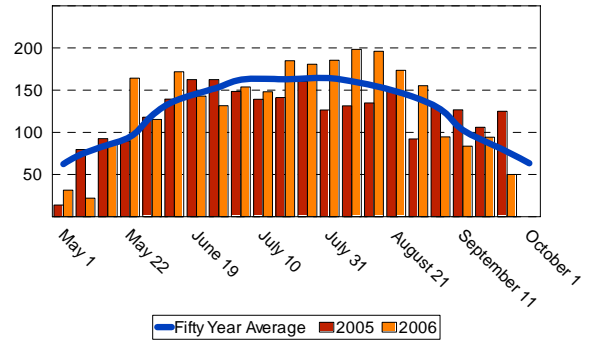
	<u>50 year</u>	<u>2005</u>	<u>2006</u>
May	389.0	367.1	371.0
June	510.0	513.6	495.6
July	767.0	589.3	828.4
August	550.0	614.7	583.4
Sept 4	89.3	112.4	83.1
Sept 11	72.4	92.6	79.7
Sept 18	58.6	119.1	32.6
Total	2,436.3	2,408.8	2,473.8



Hobart

Growing Degree Days (GDD)

	<u>50 year</u>	<u>2005</u>	<u>2006</u>
May	437.9	393.8	419.5
June	559.0	587.5	599.9
July	812.3	651.4	898.0
August	596.4	628.8	621.8
Sept 4	102.9	126.7	83.6
Sept 11	89.4	106.1	94.3
Sept 18	77.2	124.9	50.1
Total	2,675.1	2,619.2	2,767.2



Oklahoma State University, U.S. Department of Agriculture, State and Local Governments Cooperating. The Oklahoma Cooperative Extension Service offers its programs to all eligible persons regardless of race, color, national origin, gender, age, religion, disability, or status as a veteran, and is an equal opportunity employer.