



Cotton Outlook

Volume 1 Edition 21

September 20, 2006

MOTH TRAPS:

Bollworm				
	Altus	Hollis	Manchester	Tipton
June	29	30	5	38
July	183	217	49	171
Aug	47	43	29	42
Sept 2	19	8	47	11
Sept 9	24	12	13	9
Sept 16	19	16	25	15
Budworm				
	Altus	Hollis	Manchester	Tipton
June	2	3	0	11
July	41	32	0	94
Aug	10	4	0	3
Sept 2	0	0	10	9
Sept 9	0	0	2	3
Sept 16	13	11	0	8
Beet Armyworm				
	Altus	Hollis	Manchester	Tipton
June	2	2	11	6
July	47	25	4	85
Aug	0	0	1	3
Sept 2	0	0	0	0
Sept 9	0	0	0	0
Sept 16	0	0	0	0

A Growing Degree Day (GDD) is defined as 24 hours of time in which the temperature is one degree above the lower temperature threshold (60°F - 100°F). By using this range and the high and low temperatures for each day of the growing season, the amount of heat available to the cotton, measured in day degrees, can be calculated. The heat unit data is collected from *Mesonet weather network* weekly.

Cotton Growth Timetable

<u>Stage of Growth</u>	<u>GDD</u>	<u>Days</u>
Emergence	50 - 60	3 - 4
Pinhead Square	425 - 500	25 - 45
First Bloom	725 - 825	41 - 67
Open Boll	1575 - 1925	102 - 127
Defoliation	2150 - 2300	120 - 140

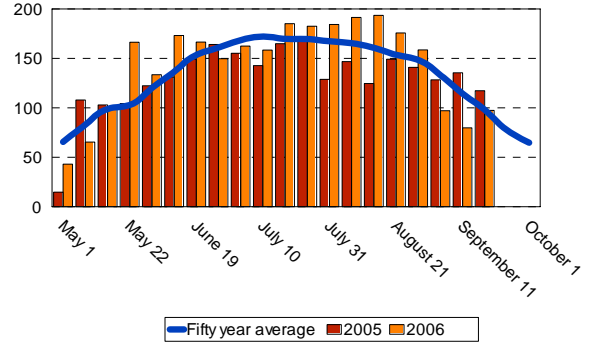
FOR FURTHER INFORMATION CONTACT:

Jerry Goodson
Extension Assistant
16721 U.S. Hwy 283
Altus, Oklahoma 73521
Office: 580-482-8880
Mobile: 580-471-8969
E-mail: jrg@osu.altus.ok.us

Altus

Growing Degree Days (GDD)

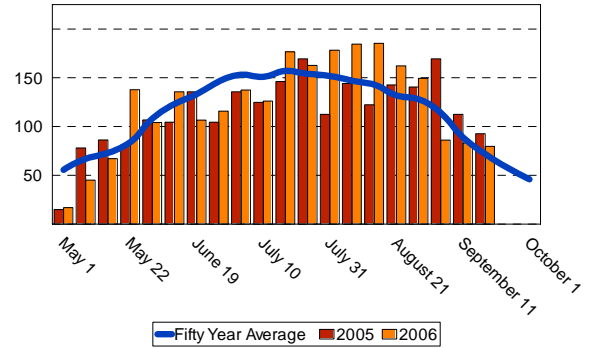
<u>Week of</u>	<u>50 year</u>	<u>2005</u>	<u>2006</u>
May 1	65.5	14.7	43.1
May 8	82.9	107.9	65.3
May 15	98.6	102.9	99.7
May 22	102.9	104.4	166.3
May 29	120.2	122.3	133.4
June 5	136.4	131.2	173.1
June 12	153.4	149.3	166.4
June 19	160.7	164.1	149.7
June 26	168.4	155.4	145.6
July 3	171.9	142.7	158.4
July 10	169.7	164.9	185.1
July 17	169.5	169.7	182.5
July 24	167.2	128.7	184.2
July 31	165.3	146.7	191.4
Aug 7	160.6	124.6	193.4
Aug 7	160.6	124.6	193.4
Aug 14	157.7	149.1	175.7
Aug 21	148.3	140.9	158.6
Aug 28	133.2	128.3	97.1
Sept 4	114.4	135.4	79.7
Sept 11	98.0	135.4	97.4
Total	2905.4	2,607.8	3,039.5



Blackwell

Growing Degree Days (GDD)

<u>Week of</u>	<u>50 year</u>	<u>2005</u>	<u>2006</u>
May 1	55.6	14.9	16.8
May 8	67.5	78.0	45.2
May 15	73.2	86.2	67.1
May 22	84.3	81.2	137.8
May 29	108.4	106.8	104.1
June 5	123.7	104.5	135.6
June 12	133.4	135.7	106.7
June 19	146.4	104.5	115.9
June 26	153.7	135.7	137.4
July 3	151.3	124.9	126.1
July 10	157.3	146.2	176.7
July 17	154.7	169.4	162.7
July 24	152.7	112.5	178.3
July 31	147.1	144.2	184.6
Aug 7	143.1	122.3	185.6
Aug 14	132.3	142.7	162.3
Aug 21	128.1	146.2	149.4
Aug 28	114.1	169.4	86.1
Sept 4	89.3	112.4	83.1
Sept 11	72.4	92.6	79.7
Total	2,388.6	2,330.3	2,441.2



Hobart

Growing Degree Days (GDD)

<u>Week of</u>	<u>50 year</u>	<u>2005</u>	<u>2006</u>
May 1	62.3	13.8	31.4
May 8	76.2	79.6	22.4
May 15	84.9	92.6	86.2
May 22	94.7	89.9	164.2
May 29	119.8	117.9	115.3
June 5	136.9	139.4	171.7
June 12	145.6	162.5	142.9
June 19	153.6	162.5	131.6
June 26	162.3	148.6	153.7
June 26	162.3	148.6	153.7
July 3	163.5	139.2	148.6
July 10	162.9	141.3	184.9
July 17	164.0	160.5	180.8
July 24	164.2	126.3	185.4
July 31	160.2	131.4	198.3
Aug 7	155.5	134.8	198.3
Aug 14	148.3	151.3	173.6
Aug 21	139.8	92.1	155.3
Aug 28	139.8	130.2	94.6
Sept 4	102.9	126.7	83.6
Sept 11	89.4	106.1	94.3
Total	2,789.1	2,595.3	2,870.8

