



# Cotton Outlook

Volume 1 Edition 19

September 6, 2006

## MOTH TRAPS:

Week of	Bollworm			
	Altus	Hollis	Manchester	Tipton
June 10	4	3	NA	3
June 17	9	6	NA	11
June 24	16	21	5	24
July 1	24	31	37	32
July 8	75	89	10	56
July 15	31	54	2	41
July 22	34	26	0	22
July 29	19	17	0	20
Aug 5	14	8	11	16
Aug 12	9	11	16	13
Aug 19	13	9	0	8
Aug 26	11	15	2	5
Sept 2	19	8	47	11
Week of	Budworm			
	Altus	Hollis	Manchester	Tipton
June 10	0	0	NA	0
June 17	0	2	NA	1
June 24	2	1	0	10
July 1	6	4	0	9
July 8	9	16	0	25
July 15	15	11	0	19
July 22	7	1	0	21
July 29	4	0	0	10
Aug 5	0	0	0	0
Aug 12	8	4	0	3
Aug 19	2	0	0	0
Aug 26	0	0	0	0
Sept 2	0	0	10	9
Week of	Beet Armyworm			
	Altus	Hollis	Manchester	Tipton
June 10	1	0	NA	0
June 17	0	0	NA	3
June 24	1	2	11	3
July 1	6	4	0	15
July 8	12	6	0	21
July 15	16	15	4	19
July 22	4	0	0	16
July 29	3	0	0	14
Aug 5	0	0	0	0
Aug 12	0	0	1	3
Aug 19	0	0	0	0
Aug 26	0	0	0	0
Sept 2	0	0	0	0

**A** Growing Degree Day (GDD) is defined as 24 hours of time in which the temperature is one degree above the lower temperature threshold (60°F - 100°F). By using this range and the high and low temperatures for each day of the growing season, the amount of heat available to the cotton, measured in day degrees, can be calculated. The heat unit data is collected from *Mesonet weather network weekly*.

### Cotton Growth Timetable

<u>Stage of Growth</u>	<u>GDD</u>	<u>Days</u>
Emergence	50 - 60	3 - 4
Pinhead Square	425 - 500	25 - 45
First Bloom	725 - 825	41 - 67
Open Boll	1575 - 1925	102 - 127
Defoliation	2150 - 2300	120 - 140

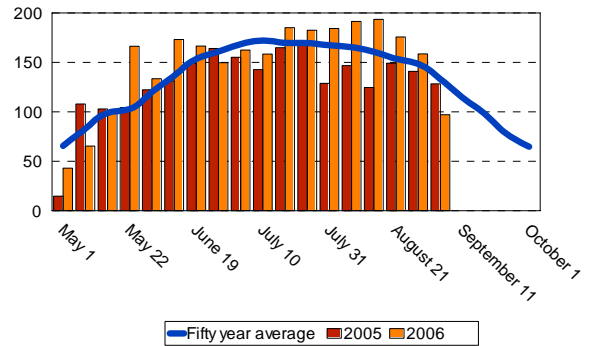
### FOR FURTHER INFORMATION CONTACT:

**Jerry Goodson**  
**Extension Assistant**  
**16721 U.S. Hwy 283**  
**Altus, Oklahoma 73521**  
**Office: 580-482-8880**  
**Mobile: 580-471-8969**  
**E-mail: [jrg@osu.altus.ok.us](mailto:jrg@osu.altus.ok.us)**

## Altus

**Growing Degree Days (GDD)**

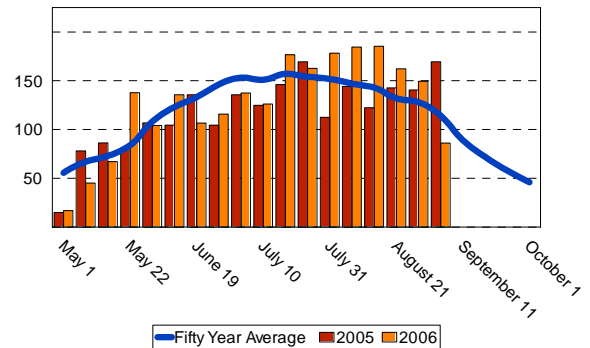
<u>Week of</u>	<u>50 year</u>	<u>2005</u>	<u>2006</u>
May 1	65.5	14.7	43.1
May 8	82.9	107.9	65.3
May 15	98.6	102.9	99.7
May 22	102.9	104.4	166.3
May 29	120.2	122.3	133.4
June 5	136.4	131.2	173.1
June 12	153.4	149.3	166.4
June 19	160.7	164.1	149.7
June 26	168.4	155.4	145.6
July 3	171.9	142.7	158.4
July 10	169.7	164.9	185.1
July 17	169.5	169.7	182.5
July 24	167.2	128.7	184.2
July 31	165.3	146.7	191.4
Aug 7	160.6	124.6	193.4
Aug 7	160.6	124.6	193.4
Aug 14	157.7	149.1	175.7
Aug 21	148.3	140.9	158.6
Aug 28	133.2	128.3	97.1
<b>Total</b>	<b>2,693.0</b>	<b>2,472.4</b>	<b>2,862.4</b>



## Blackwell

**Growing Degree Days (GDD)**

<u>Week of</u>	<u>50 year</u>	<u>2005</u>	<u>2006</u>
May 1	55.6	14.9	16.8
May 8	67.5	78.0	45.2
May 15	73.2	86.2	67.1
May 22	84.3	81.2	137.8
May 29	108.4	106.8	104.1
June 5	123.7	104.5	135.6
June 12	133.4	135.7	106.7
June 19	146.4	104.5	115.9
June 26	153.7	135.7	137.4
July 3	151.3	124.9	126.1
July 10	157.3	146.2	176.7
July 17	154.7	169.4	162.7
July 24	152.7	112.5	178.3
July 31	147.1	144.2	184.6
Aug 7	143.1	122.3	185.6
Aug 14	132.3	142.7	162.3
Aug 21	128.1	146.2	149.4
Aug 28	114.1	169.4	86.1
<b>Total</b>	<b>2,226.9</b>	<b>2,125.3</b>	<b>2,278.4</b>



## Hobart

**Growing Degree Days (GDD)**

<u>Week of</u>	<u>50 year</u>	<u>2005</u>	<u>2006</u>
May 1	62.3	13.8	31.4
May 8	76.2	79.6	22.4
May 15	84.9	92.6	86.2
May 22	94.7	89.9	164.2
May 29	119.8	117.9	115.3
June 5	136.9	139.4	171.7
June 12	145.6	162.5	142.9
June 19	153.6	162.5	131.6
June 26	162.3	148.6	153.7
June 26	162.3	148.6	153.7
July 3	163.5	139.2	148.6
July 10	162.9	141.3	184.9
July 17	164.0	160.5	180.8
July 24	164.2	126.3	185.4
July 31	160.2	131.4	198.3
Aug 7	155.5	134.8	198.3
Aug 14	148.3	151.3	173.6
Aug 21	139.8	92.1	155.3
Aug 28	139.8	130.2	94.6
<b>Total</b>	<b>2,596.8</b>	<b>2,362.5</b>	<b>2,692.9</b>

