



Current Crop and Insect Situation:

As more fields start resembling flower gardens management decisions should reflect yield potential. Beet armyworms are being reported in more fields. Also the appearance of aphids has occurred in some fields. With the forecasted hot and dry weather for the next week spray decisions should be well thought out.

Late Season Pests

Two pest that can occur this time of year and when small can be misidentified as bollworms are fall and yellow stripe armyworms. These pests create different damage and require different control strategies than bollworms.

Fall Armyworm



When less than 1/4 inch in length, fall armyworm and bollworm are very similar in appearance. Often scouts cannot differentiate between these two species until larvae approach 1/2 inch or greater in length. Unfortunately, larvae of this size are very difficult to control with insecticides. There are no absolute rules or keys to correctly differentiate small (< 1/4 inch) fall armyworm from bollworm larvae. However, as larvae age they become easier to correctly identify.

Fall armyworm larvae often appear to be smoother or less hairy than bollworm. Three light parallel stripes on the first segment behind the head on the back (prothoracic shield) become visible as larvae reach 1/4 inch or greater in length. A prominent inverted "Y" on the front on the head is apparent when larvae reach 1/2 inch in length.



The fall armyworm does not overwinter in Oklahoma, and we are reinfested each year by moths that migrate northward from Texas or Mexico. They usually reach the state by

late June. Each female lays about 1000 eggs in masses of 50 to several hundred. Larvae are present by early July. After feeding for 2 to 3 weeks, the larvae dig into the soil to pupate. A new generation of moths emerges about 2 weeks later. There are several overlapping generations extending into October or even November in some years.

Control of this pest with insecticides is very difficult due to the proximity of damaging populations. Coverage and penetration of the crop canopy is a must.

Yellow Stripe armyworm



Although yellow stripe armyworms seldom reach damaging populations once this occurs large larvae are difficult to control with pesticides. Yellow stripe larvae range from grayish to glossy black in color and have several dark triangular spots on the dorsal side. There is a yellow stripe down the side next to the spots and a black spot behind the hind legs.



Larvae damage plants principally by consumption of foliage. The small, gregarious larvae tend to skeletonize foliage but as the larvae grow and disperse they consume irregular patches of foliage or entire leaves. However, they will also feed on the squares and bolls. Please contact your local county Extension office for control information for both these pest.

**FIELD SURVEY
JULY 17, 2006**

Irrigated		
Jackson County		
	Plant Stage	Pest
1	6 NAWF	2% Bollworm larvae 6 % damaged squares 1 Beet armyworm hits
2	6 NAWF	2% Bollworm larvae 4 % damaged squares 2 Beet armyworm hits Few Aphids
3	6 NAWF	1% Bollworm larvae 4 % damaged squares Few Aphids
Harmon County		
1	6 NAWF	1% Bollworm larvae 2 % damaged squares 2 Beet armyworm hits
2	6 NAWF	1% Bollworm larvae 3 % damaged squares 1 Beet armyworm hits
3	6 NAWF	1% Bollworm larvae 3 % damaged squares
Dryland		
Greer County		
1	6 NAWF	3% Bollworm larvae 5 % damaged squares
2	5 NAWF	2% Bollworm larvae 5 % damaged squares
3	6 NAWF	3% Bollworm larvae 6 % damaged squares
Kiowa County		
1	6 NAWF	2% Bollworm larvae 5 % damaged squares
2	6 NAWF	3% Bollworm larvae 6 % damaged squares
3	6 NAWF	2% Bollworm larvae 5 % damaged squares
Washita County		
1	6 NAWF	1% Bollworm larvae 3 % damaged squares
2	6 NAWF	1% Bollworm larvae 2 % damaged squares
3	6 NAWF	1% Bollworm larvae 3 % damaged squares

MOTH TRAPS:

Week of	Bollworm			
	Altus	Hollis	Manchester	Tipton
June 10	4	3	NA	3
June 17	9	6	NA	11
June 24	16	21	5	24
July 1	24	31	37	32
July 8	75	89	10	56
July 15	31	54	2	41
July 22	34	26	0	22
Budworm				
	Altus	Hollis	Manchester	Tipton
June 10	0	0	NA	0
June 17	0	2	NA	1
June 24	2	1	0	10
July 1	6	4	0	9
July 8	9	16	0	25
July 15	15	11	0	19
July 22	7	1	0	21
Beet Armyworm				
	Altus	Hollis	Manchester	Tipton
June 10	1	0	NA	0
June 17	0	0	NA	3
June 24	1	2	11	3
July 1	6	4	0	15
July 8	12	6	0	21
July 15	16	15	4	19
July 22	4	0	0	16

GROWING DEGREE DAY:

A Growing Degree Day (GDD) is defined as 24 hours of time in which the temperature is one degree above the lower temperature threshold (60°F - 100°F). By using this range and the high and low temperatures for each day of the growing season, the amount of heat available to the cotton, measured in day degrees, can be calculated. The heat unit data is collected from *Mesonet weather network weekly*.

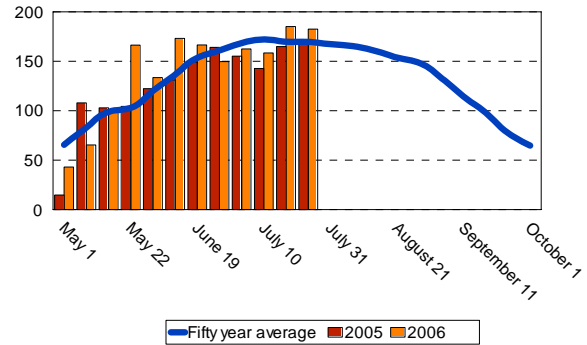
Cotton Growth Timetable

<u>Stage of Growth</u>	<u>GDD</u>	<u>Days</u>
Emergence	50 - 60	3 - 4
Pinhead Square	425 - 500	25 - 45
First Bloom	725 - 825	41 - 67
Open Boll	1575 - 1925	102 - 127
Defoliation	2150 - 2300	120 - 140

Altus

Growing Degree Days (GDD)

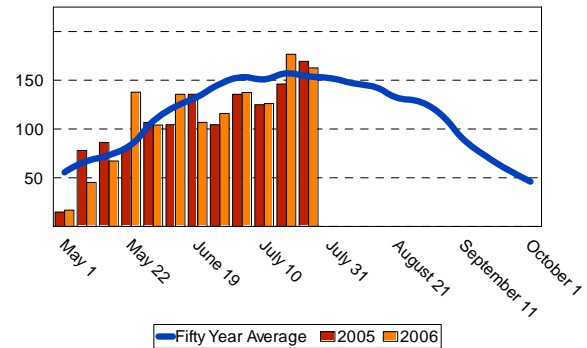
Week of	50 year	2005	2006
May 1	65.5	14.7	43.1
May 8	82.9	107.9	65.3
May 15	98.6	102.9	99.7
May 22	102.9	104.4	166.3
May 29	120.2	122.3	133.4
June 5	136.4	131.2	173.1
June 12	153.4	149.3	166.4
June 19	160.7	164.1	149.7
June 26	168.4	155.4	145.6
July 3	171.9	142.7	158.4
July 10	169.7	164.9	185.1
July 17	169.5	169.7	182.5
Total	1,600.1	1,529.5	1,668.6



Blackwell

Growing Degree Days (GDD)

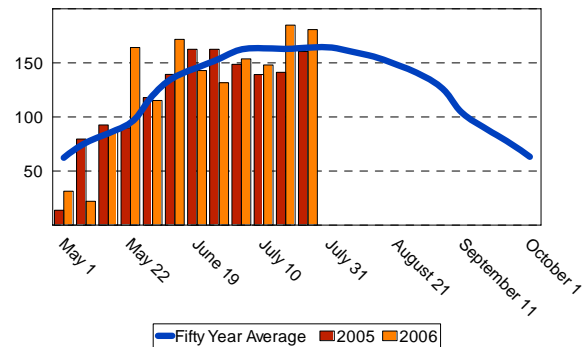
Week of	50 year	2005	2006
May 1	55.6	14.9	16.8
May 8	67.5	78.0	45.2
May 15	73.2	86.2	67.1
May 22	84.3	81.2	137.8
May 29	108.4	106.8	104.1
June 5	123.7	104.5	135.6
June 12	133.4	135.7	106.7
June 19	146.4	104.5	115.9
June 26	153.7	135.7	137.4
July 3	151.3	124.9	126.1
July 10	157.3	146.2	176.7
July 17	154.7	169.4	162.7
Total	1,254.8	1,118.6	1,169.4



Hobart

Growing Degree Days (GDD)

Week of	50 year	2005	2006
May 1	62.3	13.8	31.4
May 8	76.2	79.6	22.4
May 15	84.9	92.6	86.2
May 22	94.7	89.9	164.2
May 29	119.8	117.9	115.3
June 5	136.9	139.4	171.7
June 12	145.6	162.5	142.9
June 19	153.6	162.5	131.6
June 26	162.3	148.6	153.7
June 26	162.3	148.6	153.7
July 3	163.5	139.2	148.6
July 10	162.9	141.3	184.9
July 17	164.0	160.5	180.8
Total	1,689.0	1,596.4	1,687.4



FOR FURTHER INFORMATION CONTACT:

Jerry Goodson
Extension Assistant
16721 U.S. Hwy 283
Altus, Oklahoma 73521
Office: 580-482-8880
Mobile: 580-471-8969
E-mail: jrg@osu.altus.ok.us